

**COMMUNITIES  
HEALTH AFRICA  
TRUST**



**ANNUAL  
REPORT**  
● ● ● ● ● ● ● ● ● ●  
**2024**



## COMMUNITIES HEALTH AFRICA TRUST



### Problem Statement

A lack of access to family planning information and services contributes to poverty, suffering, and environmental degradation, which negatively impacts communities and their surrounding ecosystems.



### VISION

CHAT envisions a future where individuals, communities and ecosystems across Africa are healthy and thriving.



### MISSION

CHAT'S mission is to support underserved individuals and communities in fragile ecosystems across Kenya to access family planning information & services



### CORE PURPOSE

To enhance communities well-being by integrating health with environmental initiatives.



# MESSAGE FROM CHAT TEAM

In 2024, CHAT remained committed to delivering cost-effective, life-changing services—reaching 149,223 individuals across 19 counties through our People Health & Environment (PHE) approach. CHAT's PHE approach recognises the complex interconnection between people, their health, and the natural resources on which they depend.

With a cost per client of just \$6.62—far below the UNFPA average of \$10-20—we continue to make a lasting impact on underserved communities.

Our 67 CORP partners have been instrumental in driving positive behaviour change, strengthening communities, and ensuring access to holistic Family Planning services. By integrating human and environmental well-being, we are championing sustainable development.

## **IMPACT**

Recently, two independent community members conducted a discrete assessment in Laikipia County to gauge perceptions of Family Planning (FP) across all generations and genders. Their findings revealed a growing understanding of FP's benefits for both well-being and environmental sustainability. Notably, older generations (Baby Boomers & Gen X) now encourage younger ones (Millennials & Gen Z) to seek FP services as an option for a more sustainable future. Only one community showed apathy—despite having information, they were reluctant to access nearby health facilities for services. This insight has helped us better understand any remaining challenges and guides CHAT in finding solutions to improve/strengthen access and uptake of FP services.

Thank you for your unwavering support—you make this work possible!

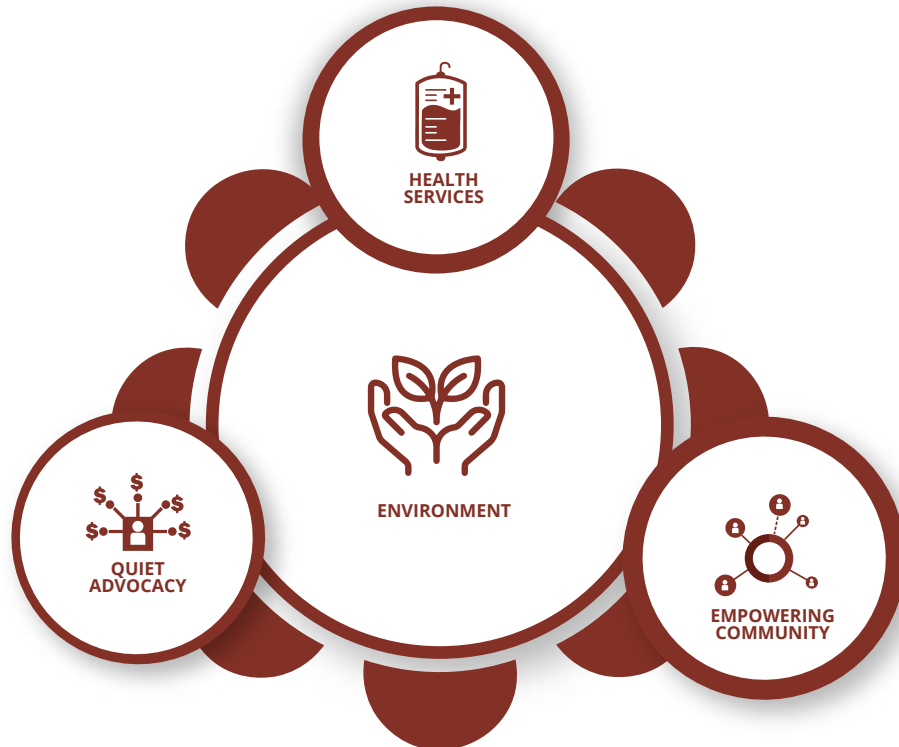




## CHATs People, Health and Environment (PHE) Approach.

CHAT's PHE approach addresses the interconnected relationships between people, health, and natural resources holistically, aiming for better outcomes for human well-being and the environment than isolated efforts.

CHAT's innovative PHE approach also assures that men and boys, as key cultural decision-makers, can actively participate in family planning services, promoting a more inclusive and effective approach to environmental and reproductive health.



## Grassroots Partners

CHAT partners with communities to select trusted 'Community Own Resource Persons' (CORPs), who are effective communicators with often no formal education requirements. CORPs go door to door, addressing local needs, focusing on family planning, Gender-Based Violence (GBV), People With Disabilities, health advocacy, and development.

CORPs have established a network where they build each other's capacity, providing support and mentorship. When one faces a challenge, they reach out to one another, collaboratively finding solutions.





## Backpack

CHAT's primary outreach strategy is the "backpack strategy," which engages CORPs to go door-to-door in their own and surrounding communities. They provide information and counselling on family planning using CHAT's PHE approach. By working with men, women and others in the privacy of their own homes, individuals can feel more comfortable and make informed decisions in a confidential and low-pressure environment.

The CORPs also provide referrals to local health facilities and assist individuals in accessing the family planning and basic health services they may need. Additionally, they engage community members in discussions about broader ecological and social issues that impact overall community well-being.



## Motor Mobile

CORPs collaborate with CHAT, local opinion leaders, and government representatives to identify communities that have limited access to health facilities, significant unmet family planning and health needs, and where the cost of accessing medical services is a barrier. In these areas, a mobile clinic can be organised initially to provide integrated health services, including family planning, immunisations, antenatal care, child welfare clinics, basic curative services, and referrals.





## Camels

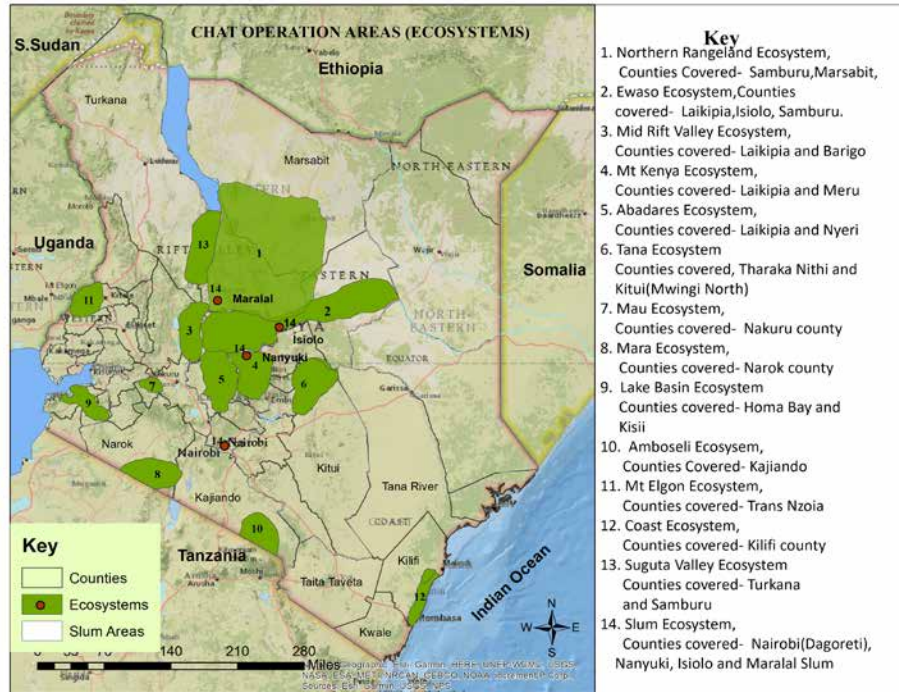
CHAT has been using camel mobile integrated health clinics to deliver essential health services, including family planning, antenatal care, HIV testing and counselling, basic treatment, and referrals (including for Gender-Based Violence) in remote, semi-arid areas. These clinics usually operate for one month at a time. However, following the last 2024 camel mobile clinic, CHAT will discontinue this strategy.



## Canoe

Canoes are used to cross from one community to the other to access vital integrated family planning services. These communities are often separated by water bodies, with some on one side lacking any health facilities. In such cases, CHAT's CORPs cross over to sensitise community members about family planning and related health services. After creating awareness, they return with a nurse to offer services through door-to-door visits, ensuring even the most remote communities receive essential healthcare.

CHAT concentrates on fragile ecosystems where human-nature coexistence occurs, spanning diverse areas like mountains, acacia woodlands, dry-land savannah, and riverine zones. Unsustainable population growth in these regions leads to environmental degradation, perpetuating cycles of poverty and hardship for the communities relying on degraded natural resources.

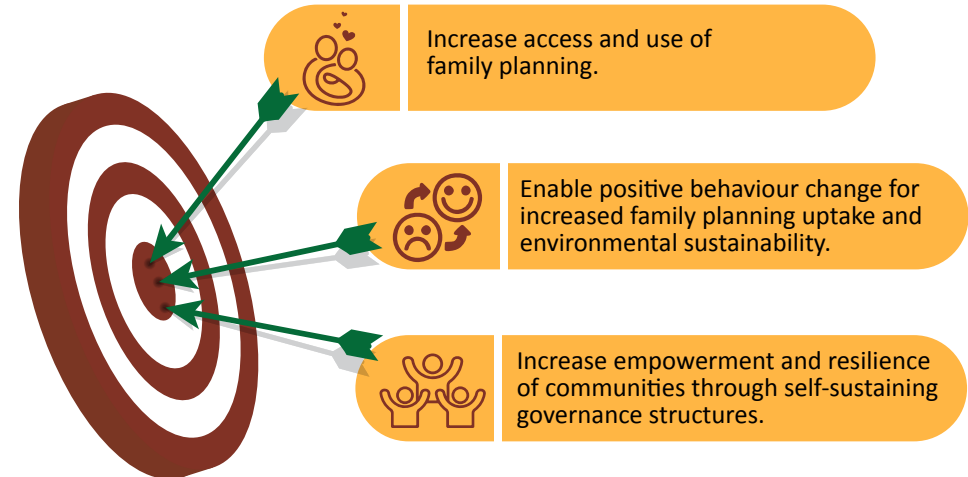


## UNDERSERVED

Approximately 80% of individuals benefiting from CHAT's services live in underserved areas. These individuals face several challenges in accessing and utilising family planning services, including poverty, limited education or literacy, remote locations without functioning health facilities, cultural and religious barriers, as well as myths and misconceptions.

Within an underserved community, CHAT directs support to the entire community, including men, women and youth. CHAT also recognises the most vulnerable and at-risk members of a community as part of the underserved individuals they support. This often includes people who are HIV-positive, sex workers, LGBTQ2S+, and people with disabilities.

CHAT focuses its work on the following goals;



CHAT's **long-term** goal is to help communities organize and advocate for their own health services as a way to reduce poverty and improve environmental sustainability.



CHAT's **impact goal:** Improving quality of life.



# CHAT's 14 ECOSYSTEMS IN 19 COUNTIES

CHAT operates in fragile ecosystems where people and nature coexist, including mountains, woodlands, savannahs, riverine areas, urban slums, and community conservancies. Over the past year, CHAT has reached over 700 communities in these regions.

In these areas, the population growth and density that CHAT addresses are unsustainable for the well-being of the communities and the environment. This strains livelihoods and the environment, deepening poverty as natural resources degrade.

For more details, click on the below maps to explore the live ecosystem maps that showcase the communities served by CHAT. CHAT continues to update the Live Ecosystem Maps regularly. Please check back from time to time for the latest updates.

## KEY FOR ECOSYSTEMS



CAMEL MOBILE OUTREACHES



MOTOR MOBILE (CIRCUITS)



NUMBER OF INDIVIDUALS REACHED WITH POSITIVE PHE BEHAVIOUR CHANGE INFORMATION



BACKPACK (ON FOOT)



VILLAGE COMMITTEES



NUMBER OF WOMEN REACHED WITH DIFFERENT FP METHODS OF THEIR CHOICE

## CHAT ACTIVITIES IN VARIOUS REGIONS IN 2024



### NORTH KENYA RANGELANDS SEMI ARID WITH ISLANDS OF MTS

📍 Samburu & Marsabit, some of Isiolo County

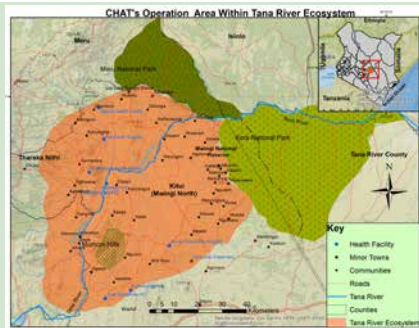
ECOSYSTEMS		23		45,497
		0		17
		11 Months		30,319

### TANA RIVER

CRITICAL WATER BASIN RUNNING THROUGH HUMID BAOBAB & SCRUBLAND

📍 Mwingi North & Tharaka South Sub-Counties

ECOSYSTEMS		3		6,692
		0		3
		4		3,734

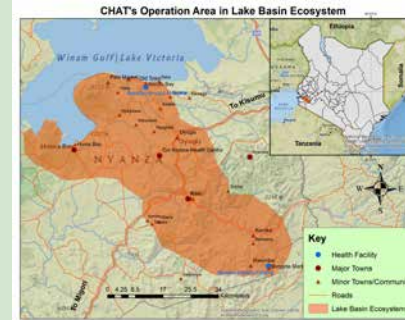
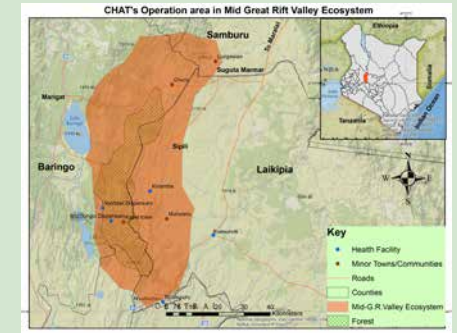


### MID EAST RIFT VALLEY

MIXED - GREEN HIG HLANDS WITH DRY SCRUB LOW SCLANDS

📍 Muchongoi in Baringo County

ECOSYSTEMS		1		2,209
		0		0
		0		1,189



### LAKE VICTORIA BASIN

FISHING, SMALL SCALE FARMING

📍 Nyaribari Masaba & Karachunyo Sub-counties

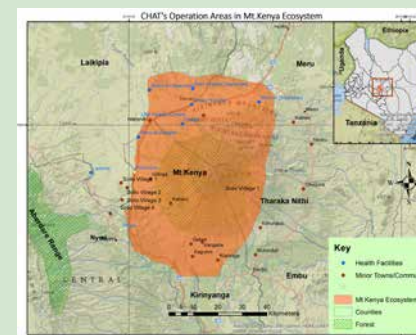
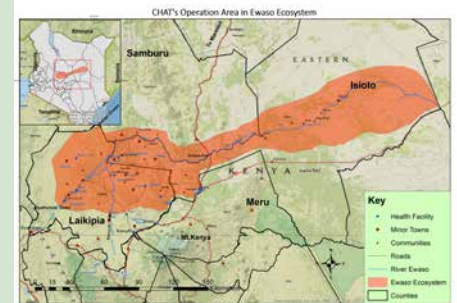
ECOSYSTEMS		2		4,632
		0		0
		0		3,218

### EWASO NYIRO

SEMI ARID AND PLATEAU

📍 Isiolo, Laikipia & Samburu Counties

ECOSYSTEMS		17		40,997
		1		12
		10 Months		29,423



### MT. KENYA

RIVERS, MOUNTAINS, FARMS & RANCHES

📍 Meru, Nyeri & Nanyuki

ECOSYSTEMS		2		4,509
		0		0
		1		2,946







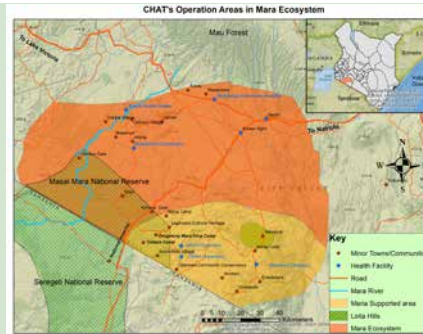
# CHAT's 14 ECOSYSTEMS IN 19 COUNTIES

## THE MARA WILDLIFE, WHEAT, PLAINS

Narok County

ECOSYSTEMS

	5		9,597
	0		0
	2		5,116

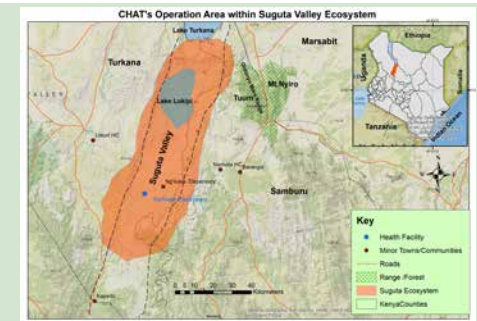


## SUGUTA VALLEY EXTREMELY HOT

Suguta Valley

ECOSYSTEMS

	1		3,134
	0		0
	1		1,121

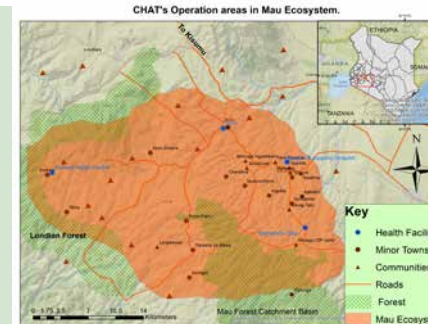


## ABERDARES MOUNTAIN RANGE MOUNTAINS, FORESTRY, RIVERS & SMALL SCALE FARMING

Nyandarua County

ECOSYSTEMS

	1		2,174
	0		0
	1		584



## THE MAU FORESTRY, RIVERS AND SMALL SCALE FARMING

Saboti, Endeless, Teldet in Trans-Nzoia County

ECOSYSTEMS

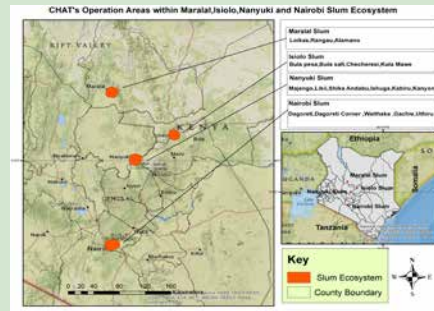
	2		5,544
	0		0
	0		2,705

## SLUMS URBAN SHANTY SETTLEMENTS

Nairobi, Laikipia, Isiolo & Maralal

ECOSYSTEMS

	5		13,103
	0		0
	1		9,426

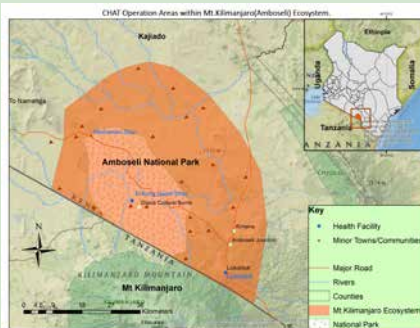
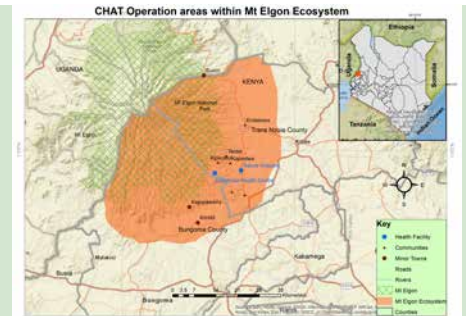


## MT. ELGON Mountain Forestry Rivers & Small Scale Farming

Elburgon, Molo & Kuresoi in Nakuru County

ECOSYSTEMS

	2		5,277
	0		0
	0		3,142



## MT. KILIMANJARO (AMBOSELI) SMALL SCALE AGRICULTURE, SEMI-ARID

Kajiado

ECOSYSTEMS

	2		3,194
	0		0
	0		1,998



## THE COAST MARINE, TOURISM, SMALL SCALE FARMS

Kuruwitu, Shariani, Vipingo in Kilifi County

ECOSYSTEMS

	1		2,664
	0		0
	0		1,285





# STATISTICS

OUTREACH STRATEGY	COUNTIES	TRIPS (2024)	INDIVIDUALS ON CONTRACEPTION	BEHAVIOR CHANGE COMMUNICATION	OTHER SERVICES
CAMEL MOBILE OUTREACHES	Isiolo & Laikipia	1*30 days	561	485	Basic curative treatment 373 ANC 1 HIV Testing & Counselling 300
MOTOR MOBILE (CIRCUITS)	Tharaka, Kitui, Samburu, Laikipia, Isiolo, Turkana, Narok & Marsabit	32 Circuits 10 Days each	9,632	46,817	Basic curative treatment 12,252 ANC 489 HIV Testing & Counselling 9,321 Immunization 612
BACKPACK (ON FOOT)	19	14	86,013	101,921	ANC 2,362 HIV Testing & Counselling 3,487 Immunization 1,172

## 149,223

Total number of individuals reached BCC



## 130

Average number of individuals reached by one CORP per month with BCC



## 25

Community structures strengthened



## 94.6%

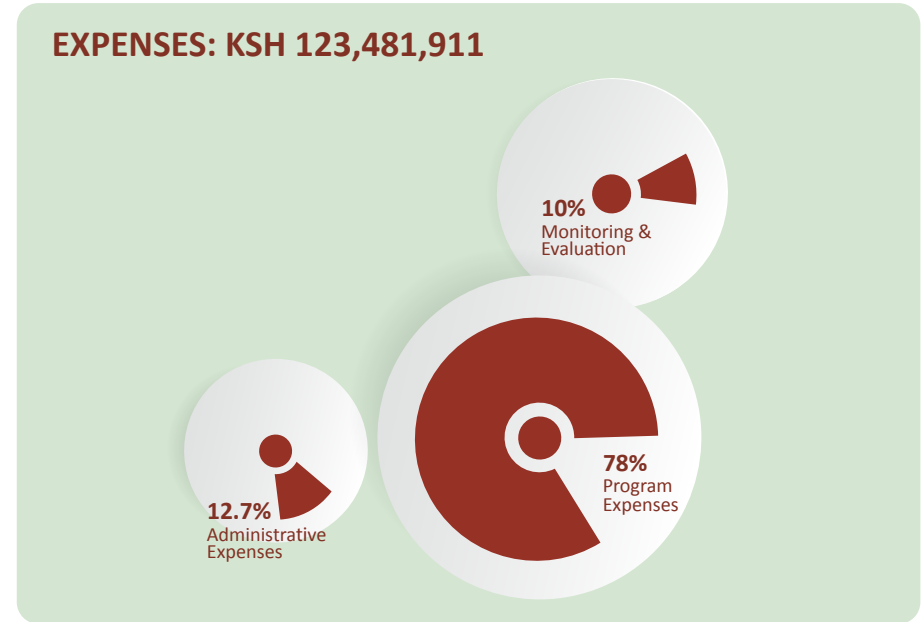
of individuals who receive CHAT's services living in rural areas



# FINANCES

## INCOME: KSH 126,164,866

## EXPENSES: KSH 123,481,911



## A DETAILED BREAKDOWN OF COSTS TAKEN FROM THE CHAT FINANCIAL STATEMENT 2024:

	Amount in Kenya Shillings
PROGRAM EXPENSES	95,513,035
MONITORING & EVALUATION	12,296,989
ADMINISTRATIVE EXPENSES	15,671,887

It cost CHAT \$6.62 per individual reached.

All annual audits are available on the CHAT website at [www.chatafrica.org](http://www.chatafrica.org) or can be requested from [mobileclinicsafrica@gmail.com](mailto:mobileclinicsafrica@gmail.com)





# TB ACTIVITIES

CHAT, in partnership with the Ministry of Health (MOH) and AMREF Health Africa implements Global Fund-supported TB interventions, including contact tracing, community screenings, patient follow-ups, and lab networking for sample referrals. In Isiolo and Laikipia, CHAT works with 61 Boda Boda riders to transport TB specimens and distribute family planning commodities.



## CHAT's TB Achievements 2024



**1,229** households of TB patients visited for contact screening and referrals for presumptive cases



**342** TB treatment interrupters physically traced



**9,369** Samples were referred for various tests through the sample referral network



# OUTCOMES

## Transforming Lives Through Family Planning

CHAT's FP intervention project has delivered significant impacts in underserved communities, addressing health, socio-economic, and developmental needs:



### Improved Access to FP Services

Increased contraceptive use has reduced unintended pregnancies, improving maternal and child health. Youth-friendly services have empowered women and adolescents to make informed choices.



### Socio-Economic Gains

Lower fertility rates are easing population pressures, enabling families to invest in education and savings while fostering economic growth.



### Community Awareness

By combating myths and engaging men and leaders in advocacy, the project has fostered positive attitudes and support for family planning.



### Public Health Benefits

Reliable FP services have reduced unsafe abortions, enhancing reproductive health and safety in underserved areas.



### Building Resilient Communities

The project is shifting social norms and advancing sustainable development, ensuring lasting improvements in well-being.

CHAT's efforts showcase a scalable model for effective FP interventions in underserved areas. By improving health, fostering socio-economic stability, and transforming community norms, it continues to serve as a vital catalyst for positive change. Through sustained efforts, CHAT is building healthier, more resilient communities and advancing sustainable development across Kenya.





# 2024 TIMELINE

(January–March)

From January to March, CHAT resumed operations after the holiday break, working with 64 CORP partners in 14 ecosystems to provide door-to-door family planning (FP) services. Grassroots partners collaborated with 53 motor bike riders to integrate FP with lab sample transport in Laikipia and Isiolo counties. Key milestones included a meeting with Samburu County's Ministry of Health to launch a new project and a visit from a donor representing a foundation in Norway. CHAT also transitioned to a new website, became an official TNC partner, and expanded FP efforts in Narok County while improving data management. CHAT attended the CHASE Africa's partners conference in Naivasha.



(April–June)

CHAT focused on supporting CORP partners and their FP services while continuing motor mobile and camel mobile clinics. The team completed the 2023 Annual Report and held a CORPs supervision meeting in Nanyuki. CHAT participated in global events like World Menstrual Hygiene Day and conducted FP activities in displaced persons camps. Despite weather disruptions in May, the backpack strategy proved vital. CHAT began purchasing a new vehicle with TNC's support. In June, CHAT's efforts in FP and TB integration continued, with field visits in the Mau and Mt. Elgon ecosystems. CHAT was confirmed for the GC7 TB project, attended AMREF's bi-annual GF-TB review, and awaited the delivery of the new vehicle

(July–September)

From July to September 2024, CHAT completed and shared its bi-annual report, while providing Power BI database training to staff. Efforts focused on updating CHAT's 5-year Strategic Plan. A baseline survey was conducted in CHAT's Ewaso River and parts of the Northern Rangelands Ecosystems, and AMREF's organizational capacity assessment was completed. In September, CHAT marked World Contraception Day and participated in the Global Fund OIG audit meeting in Nairobi. CHAT was also represented at NRT 20 yrs celebrations in Nairobi. Mobile activities and monitoring and evaluation (M&E) efforts were intensified across multiple ecosystems.

(October–December)

CHAT finalized its 5-year strategic plan. A new TNC-funded vehicle was deployed for motor mobile activities, enhancing service delivery. CHAT participated in knowledge-sharing events and began preparing an application for the Melinda Gates Foundation. Participated in the GivingTuesday campaign, driven by GlobalGiving. CHAT signed a 3-year contract for the GFTB project. Intensive M&E activities reviewed CORPs' progress and impact across ecosystems. CHAT staff went on their annual leave, though field activities continued as usual.





# HOW TO SUPPORT CHAT

If you would like to support CHAT  
Please visit:

[www.chatafrica.org/donate](http://www.chatafrica.org/donate)

To see our volunteering opportunities  
please visit:

[www.chatafrica.org/volunteer](http://www.chatafrica.org/volunteer)

For any other enquiries  
please contact:

[mobileclinicsafrica@gmail.com](mailto:mobileclinicsafrica@gmail.com)

Check out our projects on:

<https://www.globalgiving.org/donate/6423/communities-health-africa-trust/>

MPESA Paybill

831300 A/C GG18563



### US \$12

US \$12 WILL PROVIDE 2 WOMEN WITH SHORT-TERM CONTRACEPTION METHOD FOR 1 YEAR



### US \$18

WILL PROTECT 1 WOMAN AGAINST UNWANTED PREGNANCY FOR 5 YEARS



### US \$30

WILL SUPPLY 1 MAN WITH CONDOMS FOR 1 YEAR



### US \$180

WILL SUPPORT OUR PARTNERSHIP WITH A COMMUNITY OWN RESOURCE PERSON (CORP) FOR 1 MONTH



### US \$180

WILL SUPPORT OUR PARTNERSHIP WITH A COMMUNITY OWN RESOURCE PERSON (CORP) FOR 1 MONTH



### US \$180

WILL PROTECT 10 WOMEN AGAINST UNWANTED PREGNANCY FOR 5 YEARS



# DONORS AND PARTNERS

Over its history, CHAT has prioritised cultivating enduring relationships with diverse local, national, and global donors - and partners. We extend our gratitude to the many private individual donors whose contributions are invaluable to our mission. While they may not be listed here, we deeply appreciate their support. Below is a list of our donors in 2024.

## Donors

- “Anonymous” - Kenyan Trust
- Community Health a Poverty Solution (CHAPS) - US\*
- Community Health and Sustainable Environment (CHASE) - UK\*
- Mr. Rosenkranz - UK
- East Africa Women’s League - Kenya
- Evolve
- Dr. Zimmerman - Germany
- Gravy Zebra Trust
- Global Fund (TB)
- Kijani Trust – Kenya
- Mirala Foundation
- Morony Foundation - US
- Nanyuki Horse Show
- Penelope Martin Charitable Trust
- The Nature Conservancy - US
- Tropic Air Kenya
- Others via PayPal, MPESA & Global Giving

*\*CHAT is a founding partner*

## Working Partners

- 33 grassroots health support groups & VDCs
- 64 CORP Partners
- Crossroads Baptist Church
- Government of Kenya, 19 County Governments
- Mission for Essential Drugs & Supplies (MEDS)
- Nanyuki News Cotters Camp
- Kenya Forest Service - Mau Forest
- Kitirwa Conservancy - Kajiado County
- Loisaba Conservancy - Laikipia County
- Narupa Conservancy - Isiolo County
- Nkoteiya Conservancy - Samburu County
- Naibunga Conservancy - Laikipia County
- Nanapisho Conservancy - Isiolo County
- Naluwon Conservancy - Samburu County
- Naretisho Conservancy - Narok County
- Nanapa Conservancy - Isiolo County
- Kalepo Conservancy - Samburu County
- Ngilai Conservancy - Samburu County
- Kalama Conservancy - Samburu County
- Maebei Conservancy - Samburu County
- Ol Jogi Conservancy - Laikipia County
- Ol-donyiro Conservancy - Isiolo County
- Olderkesi Conservancy - Narok County
- Sera Conservancy - Samburu County
- Suiyan - Kenya
- Water Resource Users Association (WRUAs)

## Integrated TB

- Amref Health in Africa
- BodaBoda Saccos in Isiolo and Laikipia (61 Motorbike riders)
- 8 Public-Private Mix (PPM) Bodaboda Motorcycle Riders
- 34 PPM health facilities





**CHAT**  
COMMUNITIES HEALTH AFRICA TRUST

Judy and Joe Schickel  
Moses and Sarah Egan  
Samuel and Pamela Dineen  
The team includes:  
The Health Education  
and Outreach  
Unit Manager  
Community Health  
Promoters and Health  
Promoters  
Health Promoters  
Health Promoters  
Health Promoters  
Health Promoters  
Health Promoters  
Health Promoters  
Health Promoters  
Health Promoters

Kenya and Uganda Offices  
Kenya: Nairobi  
Kenya: Kisumu  
Kenya: Eldoret  
Kenya: Malindi  
Kenya: Mombasa  
Kenya: Naivasha  
Kenya: Nakuru  
Kenya: Nyeri  
Kenya: Thika  
Kenya: Vihiga  
Kenya: West Pokot  
Kenya: Wajir  
Kenya: Yala  
Kenya: Zipporah  
Uganda: Kampala  
Uganda: Jinja  
Uganda: Soroti  
Uganda: Tororo  
Uganda: Wandegaya  
Uganda: Kabale  
Uganda: Kasese  
Uganda: Mukono  
Uganda: Ntungwe  
Uganda: Rukungiri  
Uganda: Tenda  
Uganda: Unyanyanya  
Uganda: Wobesa

**CHAT**



**COMMUNITIES HEALTH AFRICA TRUST**

**CONTACTS**

-  [mobileclinicsafrica@gmail.com](mailto:mobileclinicsafrica@gmail.com)
-  [@communitieshealthafricatrust](#)
-  [@communitieshealthafrica](#)
-  [www.chatafrica.org](http://www.chatafrica.org)
-  [Lentile House, Nanyuki, Kenya](#)